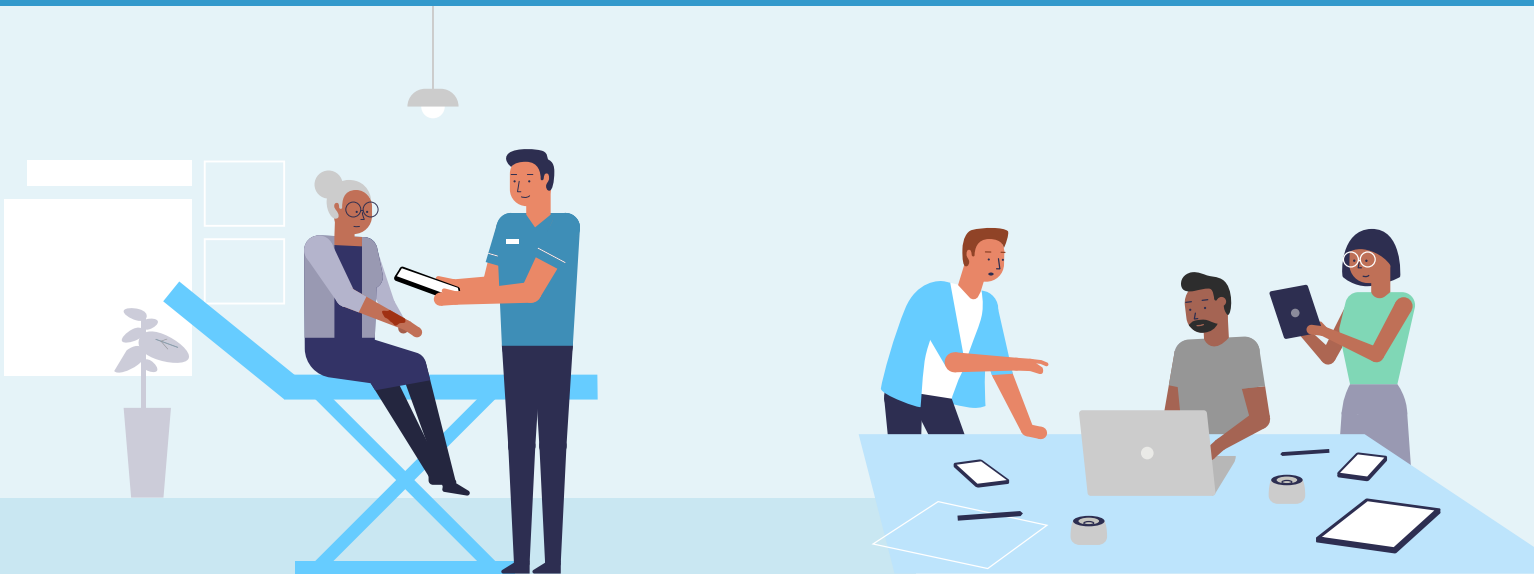


Transforming Community Wound Care Capabilities



A mobile solution that supports effective wound care management.

Silhouette is an ideal community solution because of its portability, ease of use and EMR integration for secure data sharing across multiple locations.

Easy to use

Silhouette is a **non-contact, easy-to-use system** that enable all users to quickly capture images and record healing data.

Integrated

Silhouette connects and works with a wide range of **NHS systems**.

Flexible

Silhouette works both **online and offline**, enabling data to be collected in all locations, at all times.

Connected

An online database that can be **securely accessed** via a web-based application from anywhere.

Proven

Silhouette is a **well established and agile** solution, providing a range of data capture, processing, and review capabilities for use by clinical professionals, patients, and their caregivers.

Configurable

Highly configurable software to **meet your specific needs**.



Engaged Patients:

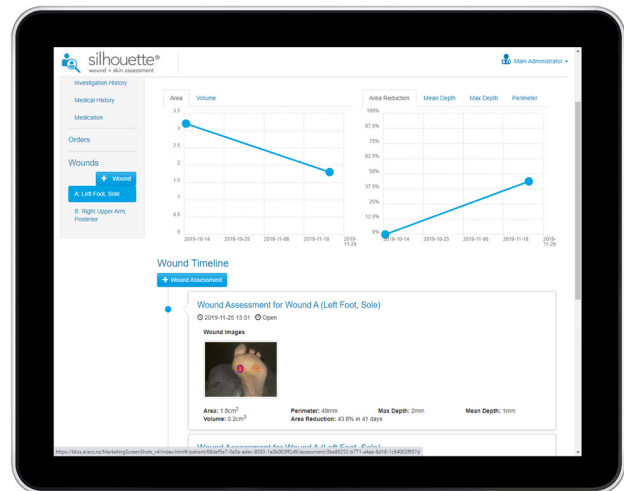
The ease of being able to see their wound assessment information for themselves helps patients understand what needs to be done and why. Engaged patients lead to a better health outcome.

Silhouette NHS technical compliance includes:

- DPIA (Data Protection Impact Assessment)
- DTAC (Digital Technology Assessment Criteria)
- CRMP (Clinical Risk Management Plan)
- Penetration Testing (cyber-security system test)
- NHS DSPT Standard (NHS Data Security and Protection Standard)

Silhouette delivers:

- Clinician and patient empowerment.
- Accurate wound outcomes data and reporting for evidence-based care.
- Wound status data for appropriate referral and joined up care.
- Improved communication across services for better patient experience.
- Clinical governance, NICE guidelines compliance, alignment to NWCSP data strategy.



Trusted by leaders in healthcare:

